



***THE PERFECT PARTNER
FOR EVERY DAY AND ANY TASK.***

FIND *NEW* ROADS™

CHEVROLET.COM

CITY EXPRESS 2015

CHEVROLET



✓ ***EVERY DAY, ANY TASK.***



**THE 2015 CITY EXPRESS.
A MODERN-DAY TASKMASTER.**

The new 2015 City Express combines city-friendly size, interior functionality, and efficiency at every turn to create a vehicle that can navigate tight city streets and your business needs. When your business routine is anything but routine, the City Express checks every box to help keep your business moving in the right direction.

FIND *NEW* ROADS™

***IT'S NOT JUST A BUSINESS,
IT'S YOUR BUSINESS.***





EXTERIOR DESIGN



- 1. Door and Window Configurations** Get in, get out, and get on with your day. The City Express features two sliding side doors as well as rear 60/40 doors that open to both 90 degrees and a full 180 degrees. Plus, there are a number of rear- and side-window glass options.
- 2. Exterior Dimensions** With a 186.3" length, 68.1" width, an overall height of 73.7", and a 36.7' turning diameter, the City Express certainly lives up to its name. These city-friendly dimensions make it well suited for tight parallel parking, navigating narrow city streets, and low overhead clearances.
- 3. Appearance Package** Want to make more of an impression? The City Express has an available Appearance Package that includes body-color bumpers, door handles, outside heated power mirrors, wheel covers, and a black-accented chrome grille.



Third party aftermarket vehicle wraps help promote your business.

INTERIOR DESIGN





DO MORE WITH LESS.

With 122.7 cubic feet¹ of cargo space and a 1500-lb payload,² the City Express makes light work of heavy tasks. Plus, with 48" between wheel wells, you can easily load and unload a standard pallet.

1. Cargo-Area Bin Packages There are a number of available cargo bin packages to help unlock additional capabilities within the City Express. Storage solutions for virtually any task include shelving, drawer units, ladder racks, and more.

2. Cargo Fasteners Keep cargo in its place with six steel floor-mounted D-rings and reinforced weld nut mounting points.

¹ Published dimensions indicated are without optional equipment or accessories. Additional accessories or equipment ordered at the customer's request could result in a minor change in these dimensions.

² Maximum payload capacity includes weight of driver, passengers, optional equipment, and cargo.

PERFORMANCE

AN UNSURPASSED IN-CLASS

24 *mpg*¹
IN THE CITY

**BORN FROM NECESSITY
AND BUILT TO SUCCEED.**

THE 2015 CHEVROLET CITY EXPRESS MEANS BUSINESS. With an unsurpassed in-class 24 mpg rating in the city,¹ compact exterior dimensions for tight streets, and a turning diameter of only 36.7', the City Express more than lives up to its name.

¹ EPA-estimated mpg: 24 city/XX hwy.





TECHNOLOGY

DRIVER INFORMATION CENTER

Knowledge is power, and the Driver Information Center provides plenty of it. With this display you can monitor and be alerted to fuel range, average speed, oil life, tire pressure, fuel used, ice warnings, engine hours, average fuel economy, tachometer, outside temperature, and maintenance reminders.

TECHNOLOGY PACKAGE Amplify your efforts with an available Technology Package¹ that includes a Rear Vision Camera, color connected radio with navigation,² 3-month SiriusXM Satellite Radio trial,³ and an integrated USB port.⁴

REAR VISION CAMERA On tight city streets and in narrow alleyways, knowing what's behind you can help you leave plenty of room for loading and unloading.

INFOTAINMENT The City Express offers a range of radio systems that include navigation² capabilities, Bluetooth connectivity,⁵ SiriusXM radio,³ hands-free smartphone connectivity, and more.



MOBILE OFFICE Two 12-volt outlets in the LT model, and one in the LS, gives you the power to run your business from the road. Plus, a total of 13 separate storage spaces and a fold-flat front passenger seat help keep everything in its place.

¹ Available on LT models only.

² Includes the 48 contiguous United States and portions of Hawaii and Canada. Not available in Alaska, Puerto Rico, or the Virgin Islands.

³ If you subscribe after your trial period, subscriptions are continuous until you call SiriusXM to cancel. See SiriusXM Customer Agreement for complete terms at siriusxm.com. Other fees and taxes will apply. All fees and programming subject to change.

⁴ Not compatible with all devices.

⁵ Not available with Technology Package. Go to gmtotalconnect.com to find out which phones are compatible with the vehicle.



MOVING YOUR COMPANY FORWARD IS YOUR BUSINESS. Moving you forward safely is ours.

Chevrolet has a strong commitment to safety, and the City Express offers a number of features to aid drivers and passengers in staying safe on the road.

1. **Air Bags** Six standard air bags,¹ including front driver and passenger air bags and front side curtain air bags, help protect passengers in the event of a collision.
2. **Four-wheel Anti-lock Brakes** Standard front disc and rear drum anti-lock brakes prevent wheels from locking up in braking situations while helping drivers maintain control of the vehicle.
3. **Traction Control and Vehicle Stability System** Tight turns and slick surfaces are everyday hazards. When these systems work together, the road ahead is a much safer place.

¹ Always use safety belts and proper child restraints, even with air bags. See the Owner's Manual for more safety information.

PEACE OF MIND

FOCUS ON THE TASK AT HAND. Worrying about your business can eat up a lot of time. With comprehensive coverage, worrying about your new City Express won't. Visit chevrolet.com/comprehensive-coverage for full program details.

2 YEARS/24,000 MILES OF SCHEDULED MAINTENANCE! Included with your 2015 City Express, you will receive oil changes, 27-point vehicle inspections, and tire rotations.

COURTESY TRANSPORTATION AND ROADSIDE ASSISTANCE² Keeping your business moving forward depends on keeping your vehicles moving. If your City Express requires warranty repairs or if you need a hand out on the road during the 5-year/100,000-mile period, you're covered. Visit chevrolet.com/owners/warranty for a complete list of coverage and assistance options.



COMPLETE CARE

COVERAGE INCLUDES:

2 years/24,000 miles of included Scheduled Maintenance¹

5-year/100,000-mile Powertrain Limited Warranty²

5-year/100,000-mile Roadside Assistance and Courtesy Transportation²

3-year/36,000-mile Bumper-to-Bumper Limited Warranty²

6-year/100,000-mile Rust-Through Protection²

¹ Covers only scheduled oil changes with filter and tire rotations according to your new vehicle's recommended maintenance schedule for up to 2 years or 24,000 miles, whichever comes first. Does not include air filters. Maximum of four service events. See participating dealer for other restrictions and complete details.

² Whichever comes first. See dealer for details.

COLORS

THESE SHOULD ALL BE LT'S WITH APPEARANCE PACKAGE JELLYBEANS



Galvanized Silver
(K0U)



Designer White
(GQX)



Black Pipe
(2QU)



Furnace Red
(J0U)



Blue Ink
(32U)

WHEELS / TIRES / COVERS

PRODUCT INCORRECT



15" Steel Wheel
(Standard on LS and LT)



15" Aluminum Wheel
(Available on LT)



Aluminum-Clad Wheel Covers
(Available with Appearance Package)

WINDOW GLASS OPTIONS (THREE SEPARATE OPTIONS)

THESE SHOULD ALL BE LT'S WITH APPEARANCE PACKAGE AND GLASS DATA JELLYBEANS



Rear-Door Glass



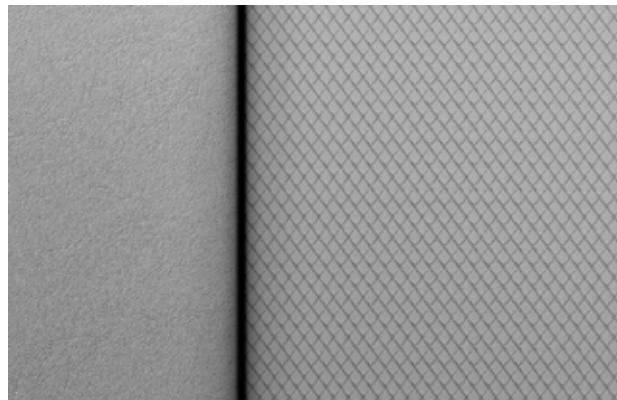
Passenger-Side and
Rear-Door Glass



Driver-Side, Passenger-Side
and Rear-Door Glass

NEED REAR
3/4 JELLYBEAN

INTERIOR FABRIC & COVERINGS



Front Bucket Seat Covering—Medium Pewter



Vinyl Cargo Floor Covering—Black

STANDARD & AVAILABLE FEATURES

	LS	LT
2.0L DOHC L1 engine (131 hp @ 5200 rpm, 139 lb-ft of torque @ 4900 rpm)	●	●
5-speed automatic with Xtronic continuously variable transmission	●	●
Cruise control	○	●
Manually adjustable front bucket seats	●	●
Fold flat front passenger seat with work desk	●	●
4-wheel anti-lock brakes, front disc, rear drum	●	●
Full-size spare tire/wheel	●	●
Tire pressure monitoring system	●	●
Aluminum wheel covers ¹	○	○
Driver and front-passenger air bags ²	●	●
Front side curtain air bags ²	●	●
Traction Control and vehicle stability system	●	●
Navigation System ³	—	○
Rear Park Assist	○	○
Rear Vision Camera ⁴	—	○
Manual air conditioning	●	●
Rear window defogger ⁵	○	○
Power windows	●	●
Inside rearview mirror ⁵	○	○
Power-adjustable heated side mirrors ¹	—	○
Driver- and passenger-side sliding doors	●	●
60/40 split rear doors with 90- and 180-degree opening range	●	●
Power door locks	—	●
Theft deterrent system	●	●
Remote keyless entry	—	●
Rear door glass	○	○
Passenger-side and rear-door glass	○	○
Driver-side, passenger-side, and rear-door glass	○	○
USB port ⁶	—	○
SiriusXM Satellite Radio ⁷	—	○
Driver Information Center	●	●
12-volt power outlet	●	—
2 12-volt power outlets	—	●
Bluetooth® for phone ⁸	○	○
Black bumpers	●	●
Black door handles	●	●

	LS	LT
Grille, dark silver with black accents	●	●
Outside manual black mirrors	●	—
Outside power-adjustable black mirrors	—	●
Interior, map, and cargo area lighting	●	●
Reinforced mounting points (weld nuts)	●	●
6 floor-mounted D-ring cargo hooks	●	●
Luggage rack (provisions only)	●	●

AUDIO SYSTEMS

2-speaker AM/FM radio system with CD player	●	●
Color connected radio with navigation, color touch-screen display, AM/FM SiriusXM radio with CD player and GPS navigation	—	●
Color connected radio includes Bluetooth streaming audio for music and select phones and hands-free smartphone integration	—	●

PACKAGES

Appearance Package Includes body-color front and rear bumpers, body-color outside heated power mirrors, body-color door handles, wheel covers, and chrome grille with black accents	○	○
Technology Package Includes Navigation System, ³ Rear Vision Camera, ⁴ SiriusXM Satellite Radio, ⁷ and a USB port ⁶	—	○

● STANDARD ○ AVAILABLE — NOT AVAILABLE

¹ Available when purchased as part of Appearance Package.
² Always use safety belts and the proper child restraints, even with air bags. See the Owner's Manual for more information.
³ Included and only available with Technology Package. Includes the 48 contiguous United States and portions of Hawaii and Canada. Not available in Alaska, Puerto Rico, or the Virgin Islands.
⁴ Included and only available with Technology Package.
⁵ Available with window packages, including rear door glass.
⁶ Not compatible with all devices.
⁷ Included and only available with Technology Package. Important: The SiriusXM Satellite Radio trial package is not provided on vehicles that are ordered for Fleet Daily Rental (FDR) use. If you decide to continue listening after your trial, the subscription plan you choose will automatically renew and you will be charged according to your chosen payment method at then-current rates. Fees and taxes apply. To cancel you must call us at 1-866-635-2349. See our Customer Agreement for complete terms at siriusxm.com. All fees and programming subject to change.
⁸ Not available with Technology Package.

DIMENSIONS

THESE SHOULD ALL BE LT'S WITH APPEARANCE PACKAGE JELLYBEANS AND GLASS DATA



60"
68.1"



115.2"
186.3"



59.8"

73.7"

MAXIMUM CAPACITIES

EPA-ESTIMATED FUEL ECONOMY	24 city/26 hwy/ 2.0L DOHC L1 Engine
FUEL TANK (APPROXIMATE)	14.5 gallons
RANGE (APPROXIMATE)	362 miles
MAX PAYLOAD	1500 lbs ¹

CARGO VOLUME	122.7 cubic feet ²
MAX CARGO LENGTH	82.8"
MAX CARGO HEIGHT	53"
CARGO WIDTH AT INTERIOR WHEEL WELL	48"

OWNERSHIP EXTRAS



CHEVROLET.COM/WARRANTY



CHEVROLET.COM/ACCESSORIES



SIRIUSXM.COM

GM BUSINESS CHOICE



The GM Business Choice is an enhanced incentive program specifically designed for business owners who use their vehicles for work-related purposes. Visit gmfleet.com/business-choice-offers.html to learn about this valuable program.

WARRANTY

5-YEAR/100,00-MILE TRANSFERABLE POWERTRAIN LIMITED WARRANTY Every 2015 Chevrolet passenger car, light-duty truck, SUV, and crossover comes with a 5-year/100,00-mile (whichever comes first) transferable Powertrain Limited Warranty. Plus, you get 5 years/100,000 miles (whichever comes first) of the 24/7 Roadside Assistance Program, the Courtesy Transportation Program, and much more. See dealer for details.

NEW-VEHICLE LIMITED WARRANTY GM vehicles registered in the USA are covered for 3 years/36,000 miles (whichever comes first). The complete vehicle is covered, including tires, towing to your nearest Chevrolet dealership, and cosmetic corrosion resulting from defects. Repairs will be made to correct any vehicle defect, and most warranty repairs will be made at no charge. In addition, rust-through corrosion will be covered for 6 years/100,000 miles (whichever comes first). See dealer for details.

¹Published dimensions indicated are without optional equipment or accessories. Additional accessories or equipment ordered at the customer's request could result in a minor change in these dimensions.

²Max payload includes total weight of passengers and aftermarket accessories.

IMPORTANT INFORMATION

CHEVROLET OWNER CENTER (MY.CHEVROLET.COM) Everything you need to know. Anything you need to do. Your Chevrolet Owner Center makes it easy. Create your account today to get the most out of your new vehicle. Get special alerts and offers, schedule service, review your maintenance schedule, and view how-to videos specifically for your vehicle. All online, any time. Visit the Owner Center today to register or take a tour.

CHEVROLET COMPLETE CARE Every new 2015 Chevrolet City Express comes with 2 years/24,000 miles of scheduled maintenance that includes oil and filter changes, tire rotations, and multi-point vehicle inspections. Covers only scheduled oil changes with filter and tire rotations according to your new vehicle's recommended maintenance schedule for up to 2 years or 24,000 miles, whichever comes first. Does not include air filters. Maximum of four service events. See participating dealer for other restrictions and complete details.

ENGINES Chevrolet products are equipped with engines produced by GM Powertrain or other suppliers to GM worldwide. The engines in Chevrolet products may also be used in other GM makes and models.

ASSEMBLY Chevrolet vehicles and their components are assembled or produced by different operating units of General Motors, its subsidiaries, or suppliers to GM worldwide. We sometimes find it necessary to produce Chevrolet vehicles with different or differently sourced components than originally scheduled. Since some options may be unavailable when your vehicle is assembled, we suggest you verify that your vehicle includes the equipment you ordered and that, if there were changes, they are acceptable to you.

A NOTE ON CHILD SAFETY Always use safety belts and the correct child restraint for your child's age and size, even with air bags. Even in vehicles equipped with the Passenger Sensing System, children are safer when properly secured in a rear seat in the appropriate infant, child, or booster seat. Never place a rear-facing infant restraint in the front seat of any vehicle equipped with an active frontal air bag. See the Owner's Manual and child safety seat instructions for more safety information.

IMPORTANT WORDS ABOUT THIS CATALOG We have tried to make this catalog comprehensive and factual. We reserve the right, however, to make changes at any time, without notice, in prices, colors, materials, equipment, specifications, models, and availability. Specifications, dimensions, measurements, ratings, and other numbers in this catalog and other printed materials provided at the dealership or affixed to vehicles are approximations based on design and engineering drawings, prototypes, and laboratory tests. Your vehicle may differ due to variations in manufacture and equipment. Since some information may have been updated since the time of printing,

please check with your Chevrolet dealer for complete details. Chevrolet reserves the right to lengthen or shorten the model year for any product for any reason or to start and end model years at different times. Certain vehicle features may lose their usefulness over time due to obsolescence from technological changes. Unless otherwise noted, all claims based on GM Light-Duty Truck segment and latest available competitive information. Excludes other GM vehicles.

FLEET ORDERS Some standard content may be deleted on fleet orders. See dealer for details.

CHEVROLET OWNERSHIP EXPERIENCE Chevrolet is committed to enhancing the vehicle shopping and ownership experience through a wide array of programs. Visit chevrolet.com to build and price, find a vehicle, request a quote, compare vehicles, find financial tools, or track your vehicle order. You'll also find information about 24-hour Roadside Assistance, Courtesy Transportation, Customer Assistance, GM Mobility, safety, and current incentives.

CHEVROLET.COM/SAFETY Chevrolet is committed to keeping you safe – from the start of your journey to your destination. That's why every Chevrolet is designed with a comprehensive list of safety and security features to help give you peace of mind.

GMMOBILITY.COM (1-800-323-9935) GM Mobility offers financial assistance for eligible adaptive equipment to make automotive travel easier for persons with disabilities or special transportation needs. To learn more about special GM Mobility offers, visit gmmobility.com.

THE BUYPOWER CARD Every purchase you make with the BuyPower Card from Capital One¹ helps you earn toward an eligible new Chevrolet, Buick, GMC, or Cadillac vehicle. There's no limit on the amount you can earn or redeem, and your Earnings don't expire. Visit chevroletbuypowercard.com/catalogs.

¹Capital One, N.A. is the issuer of the BuyPower Card. General Motors ("GM") is responsible for the operation and administration of the Earnings program.

ECOLOGIC WINDOW LABEL As part of our Ecologic initiative for environmental responsibility, every 2015 Chevrolet retail vehicle features an Ecologic window label detailing some of its fuel-saving technologies, responsible manufacturing processes, and end-of-life recyclability. Visit chevrolet.com/ecologic for more information.



TWITTER.COM/CHEVROLET



YOUTUBE.COM/CHEVROLET



FACEBOOK.COM/CHEVROLET

GM, the GM logo, Chevrolet, the Chevrolet logo, and the slogans, emblems, vehicle model names, vehicle body designs, and other marks appearing in this catalog are the trademarks and/or service marks of General Motors, its subsidiaries, affiliates, or licensors. All rights reserved. SiriusXM and all related marks and logos are trademarks of SiriusXM Radio Inc. The Bluetooth word mark is a registered trademark owned by Bluetooth SIG, Inc., and any use of such mark by Chevrolet is under license.

©2014 General Motors. All rights reserved. Litho in USA.

MONTH 2014

